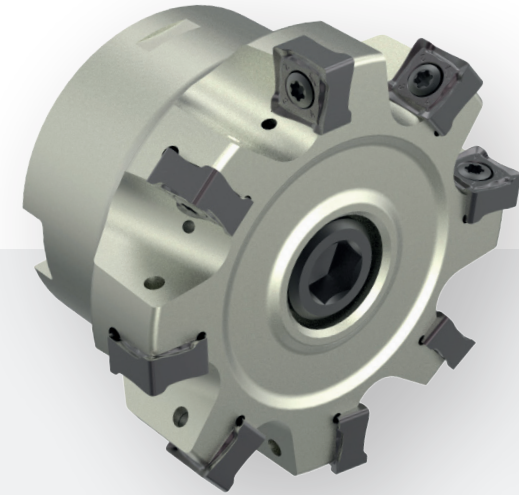
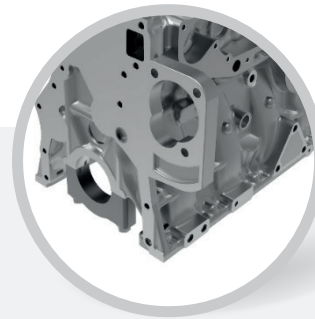


K

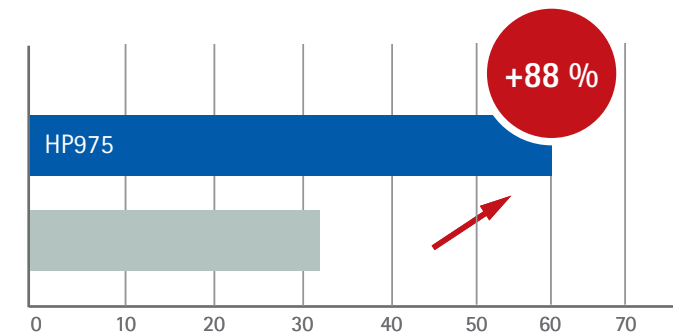
ENGINE BLOCK

Milling of flat surfaces and shoulder machining



	■	■
Material	EN-GJL-250	
Tool	Corner Mill	Corner Mill NeoMill®-8-Corner
Insert	WSP	SNMU120508R-M05-HP975
Tool-Ø [mm]	80	
Tooth t	8	
Cutting edges per insert	4	8
Coolant	Trocken	
v_c [m/min]	200	
f_z [mm]	0,1	
v_f [mm/min]	637	
a_p [mm]	2 - 5	
a_e [mm]	8 - 43	
Number of cuts	1	

Machined parts



- Tool life increased by 88 %
- Very low burr formation - subsequent deburring is no longer necessary
- CPP reduced by 42 %